



Chartfield Road, Reigate

Offers Over £800,000

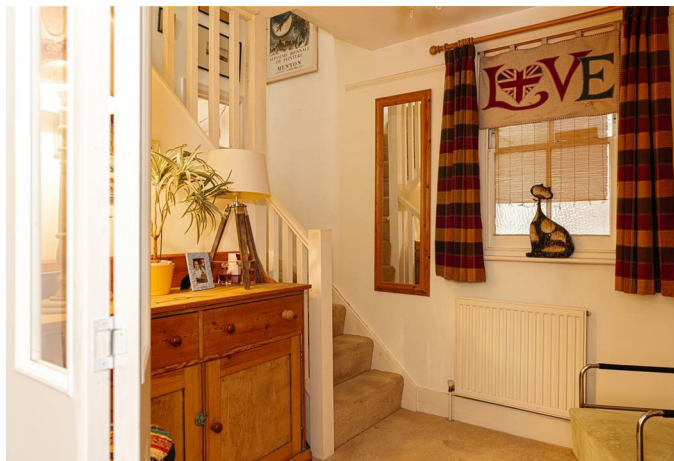




“

This detached home is full of character and the rear garden is such a delight, much larger than the gardens of other similar properties within the local area. The views to the rear are superb, it's hard to imagine you are just a short walk from the town centre.

”



£800,000 - CHAIN FREE

This attractive detached home is located in a popular residential road within walking distance of many of the local schools, including Reigate Grammar, Dunottar, Reigate School, Reigate St Marys and Reigate Parish. There are local shops close by on Lesbourne Road and the area itself has a great sense of community.

The house itself was built in the 1920's and is full of character and charm with original fireplaces, doors and picture rails. Once inside the hallway feels spacious and welcoming. There is a lovely bright living room with a large square bay window and cosy log burner. The kitchen dining room spans across the rear of the property with doors opening onto the delightful rear garden. There is also a useful utility room and downstairs cloakroom.

Upstairs you will find three bedrooms and the family bathroom. The views to the rear of the property over the garden and beyond, are far reaching towards Reigate Hill creating a stunning backdrop in the distance.

Outside the property has a beautiful garden, a real haven in such a central location. There is a large patio terrace before the lawn stretches out in front of you, surrounded by mature trees and shrubs. Tucked away at the bottom of the garden is a useful summer house with power and space for a vegetable plot.



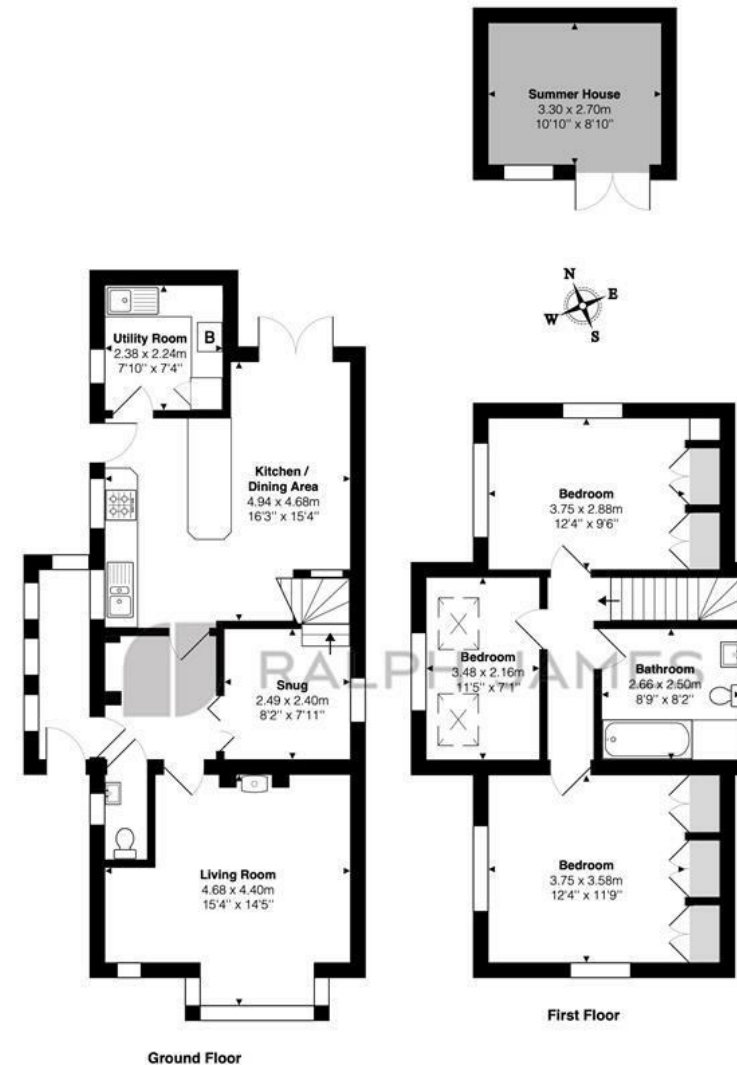
Need to know

- Detached, three bedroom family home
- Superb location, close to local shops, schools, Priory Park and Reigate town centre
- Driveway parking
- Large living room with log burning stove
- Spacious hallway with glazed doors and room for a desk, ideal for home working
- Good size kitchen / dining room opening onto the rear garden
- Stunning, large, secluded rear garden with patio area and summer house with power
- Great road with lovely community feel to it
- Further potential to extend (stpp)
- *CHAIN FREE*

Interested?

reigate@ralphjames.co.uk
01737 333677

ralphjames.co.uk



Chartfield Road, Reigate

Total Area: 123.7 m² ... 1332 ft²

FOR ILLUSTRATIVE PURPOSES ONLY.

Whilst every attempt has been made to ensure the accuracy of the floor plan shown, all measurements, positioning, fixtures, features, fittings and any other data shown are an approximate interpretation for illustrative purposes only and are not to scale.

No responsibility is taken for any error, omission, miss-statement or use of data shown.

The above statement applies to both 'Still Moving London LTD' and the Company or individual displaying this floor plan.

Unauthorised reproduction prohibited.

Â© Still Moving London LTD (www.stillmoving.london)

RALPH JAMES